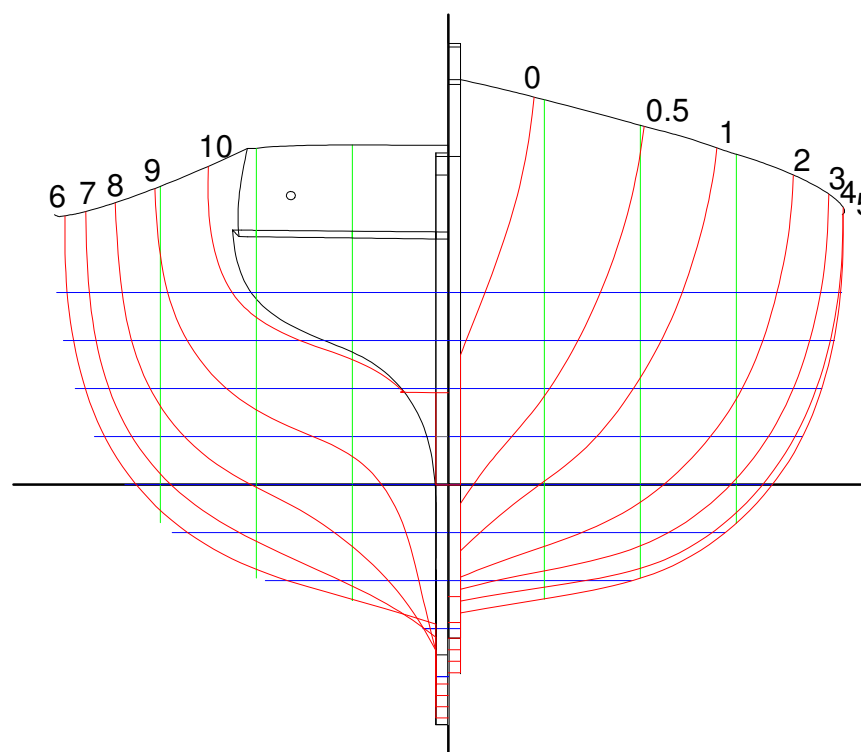


LINES PLAN



PRINCIPAL PARTICULARS

Length Overall.....	25.50 ft
Length W.L.....	22.86 ft
Beam.....	8.25 ft
Draught	2.50 ft
Depth	7.10 ft
Displacement.....	2.375 lt
Cp	0.557

"2 Masted Boat F1993-380"

NOTES

This lines plan was produced by 3D laser scanning the National Museum model
 The boat was then modelled to assign weights and establish Centre of Gravity
 The boat was then ballasted parallel with 1,000 Kg
 Lines drawn to outside of planking

Traditional Boats of Ireland Project

DRAWN P. Tanner
 DRAWING NUMBER 1
 MODEL UNITS feet

DATE 12/12/2010
 SHEET 1 of 3 - A 3
 SCALE 1/2 Inch to 1 foot