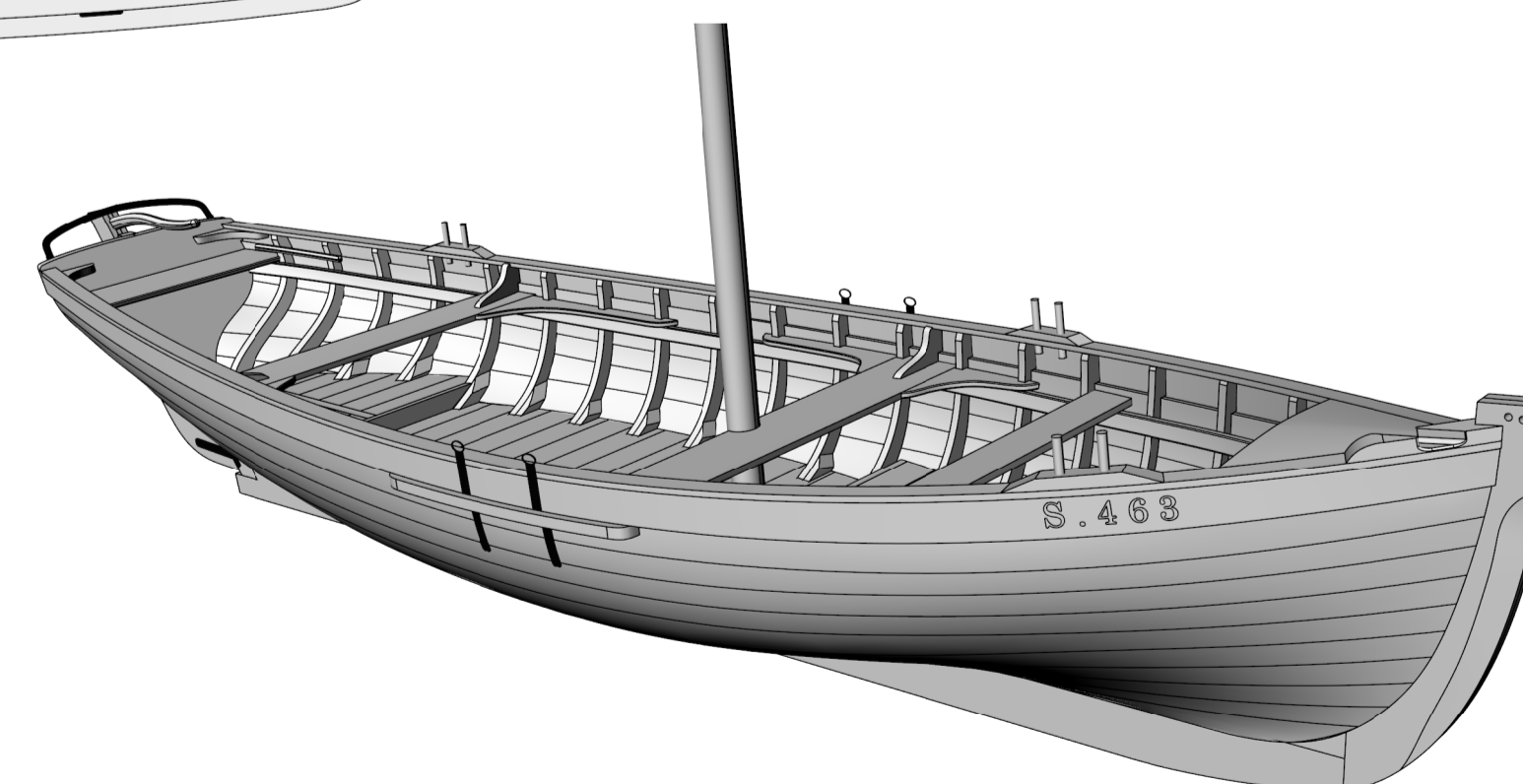
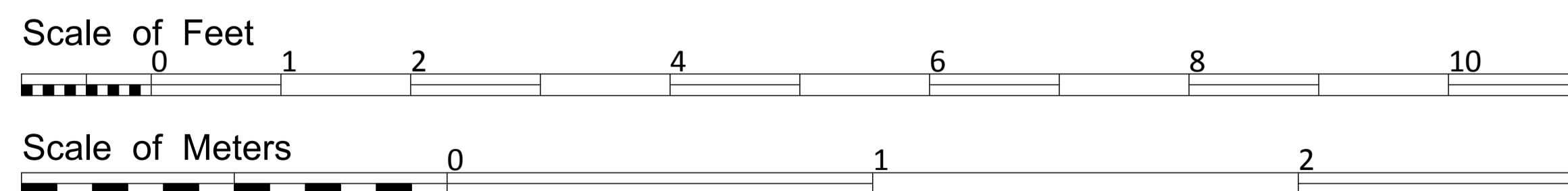
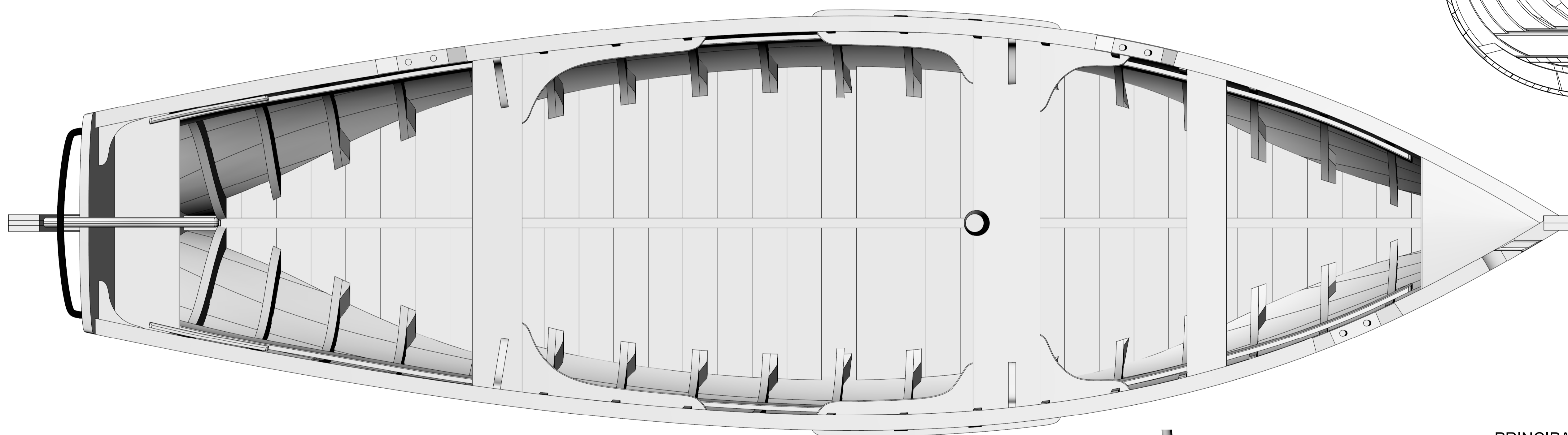
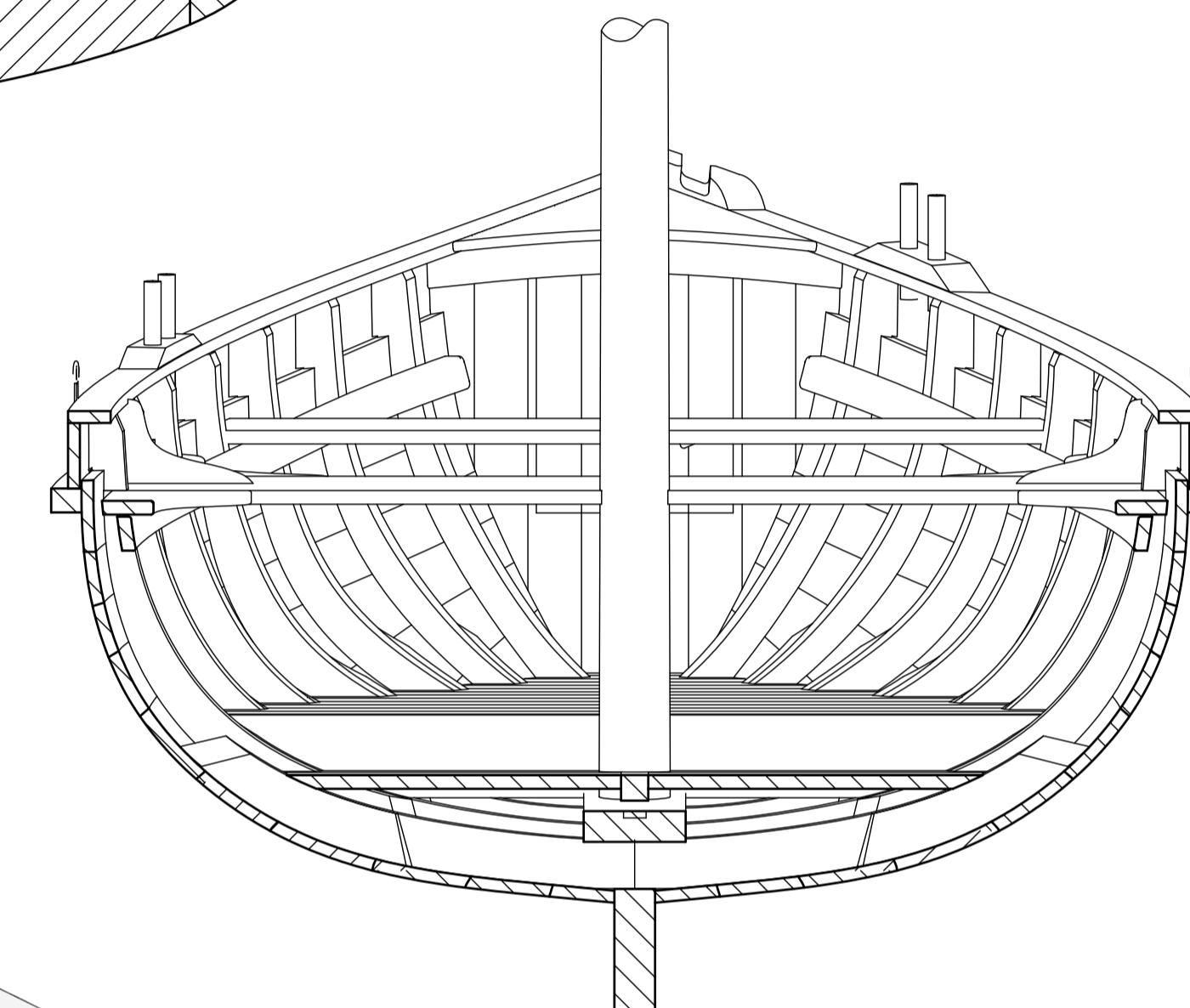
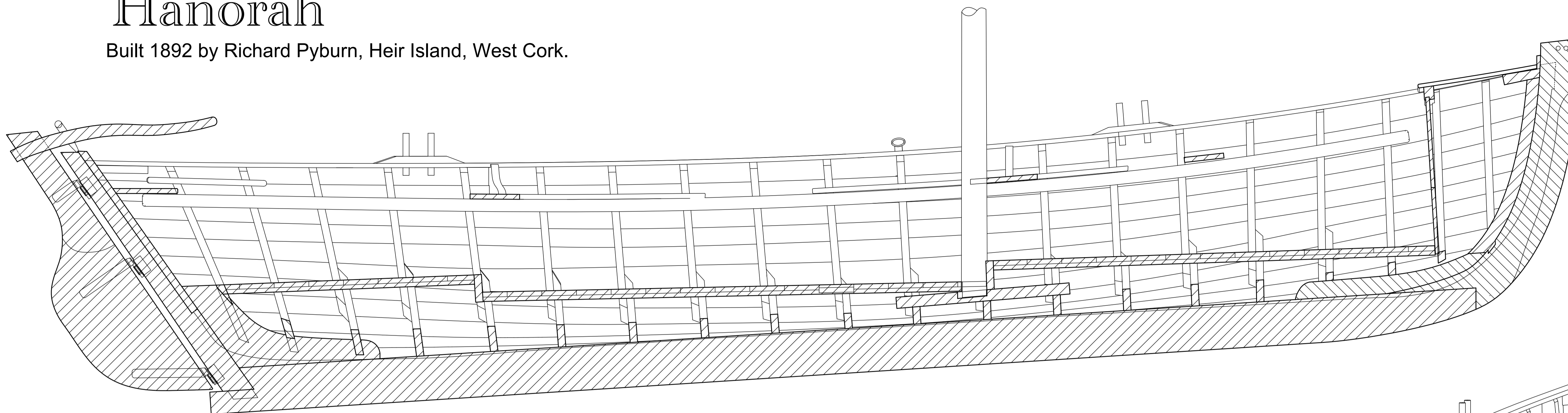


# "Hanorah"

Built 1892 by Richard Pyburn, Heir Island, West Cork.



An Chomhairle Oidhreachta  
The Heritage Council

**PRINCIPAL PARTICULARS**

Length Overall (On Deck).....	7.79 m (25' - 6")
Length W.L.....	7.08 m (23' - 2¾")
Beam.....	2.13 m (6' - 11")
Draught .....	0.73 m (2' - 4¾")
Displacement.....	1,785 kg (1.75 tons)



**NOTES**  
This lines plan was produced by 3D laser scanning the original Vessel  
Lines drawn to outside of planking

## General Layout

CP.....0.540 AWP.....8.07 m<sup>2</sup> (86.87 ft<sup>2</sup>) WSA.....12.43 m<sup>2</sup> (133.8 ft<sup>2</sup>) LCB.....55.74% Weight to Immerse 82.8 kg/cm (463.5 lbs/in)

### Traditional Boats of Ireland Project

DRAWN	P. Tanner	DATE	30/11/2012
DRAWING NUMBER	1	SHEET	2 of 3 A1
MODEL UNITS	Feet	SCALE	1" = 1'-0"