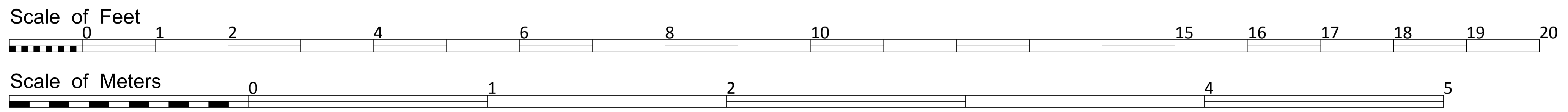
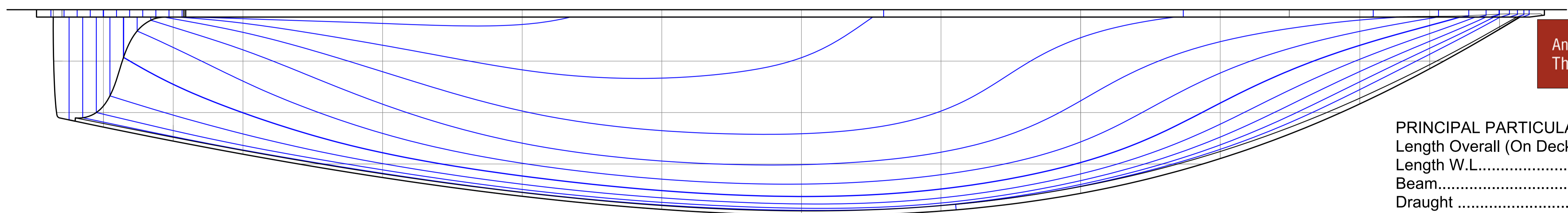
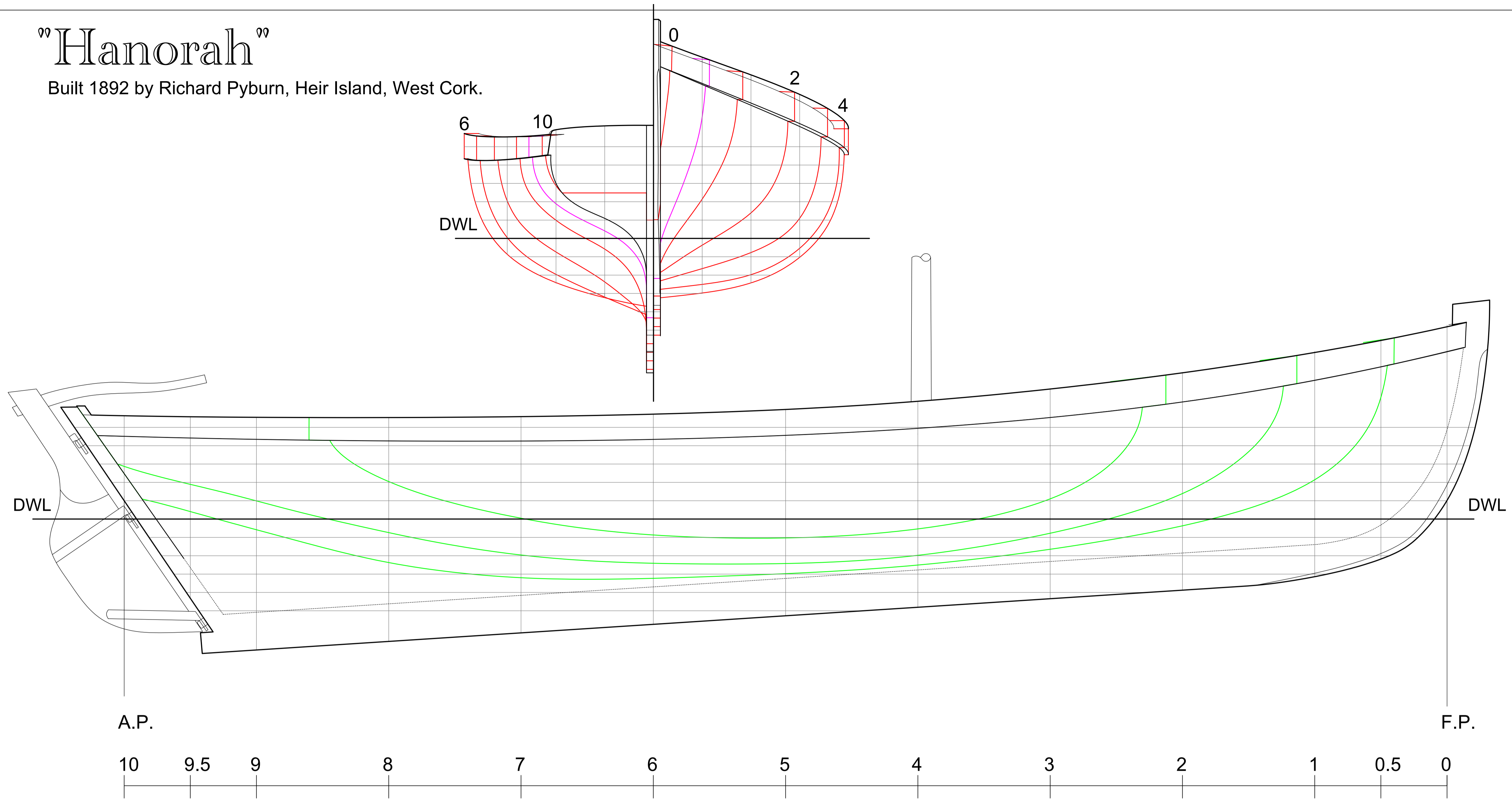


“Hanorah”

Built 1892 by Richard Pyburn, Heir Island, West Cork.



PRINCIPAL PARTICULARS

Length Overall (On Deck).....	7.79 m (25' - 6")
Length W.L.....	7.08 m (23' - 2¾")
Beam.....	2.13 m (6' - 11")
Draught	0.73 m (2' - 4¾")
Displacement.....	1,785 kg (1.75 tons)



NOTES
 This lines plan was produced by 3D laser scanning the original Vessel
 Lines drawn to outside of planking

LINES PLAN

CP.....0.540 AWP.....8.07 m² (86.87 ft²) WSA.....12.43 m² (133.8 ft²) LCB.....55.74% Weight to Immerse 82.8 kg/cm (463.5 lbs/in)

Traditional Boats of Ireland Project

DRAWN	P. Tanner	DATE	30/11/2012
DRAWING NUMBER	1	SHEET	1 of 1 A1
MODEL UNITS	Feet	SCALE	1" = 1'-0"