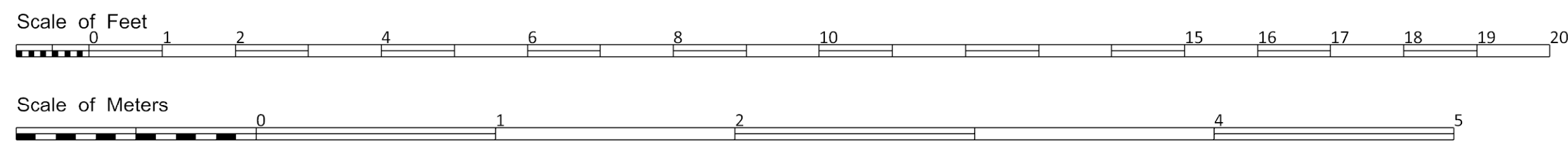
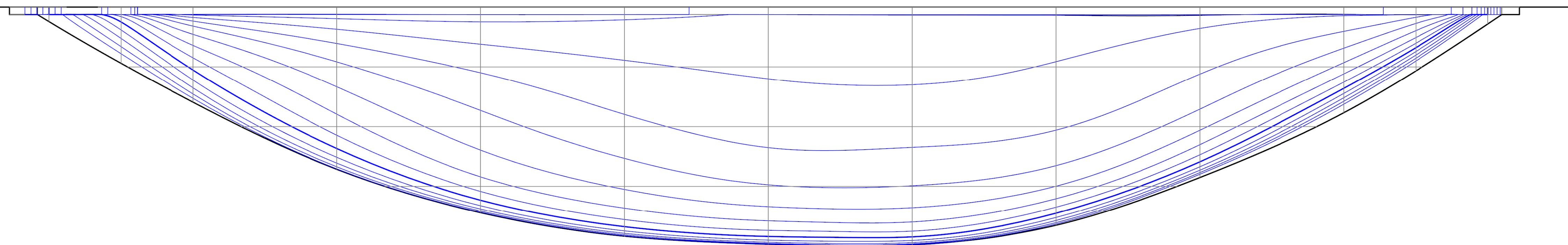
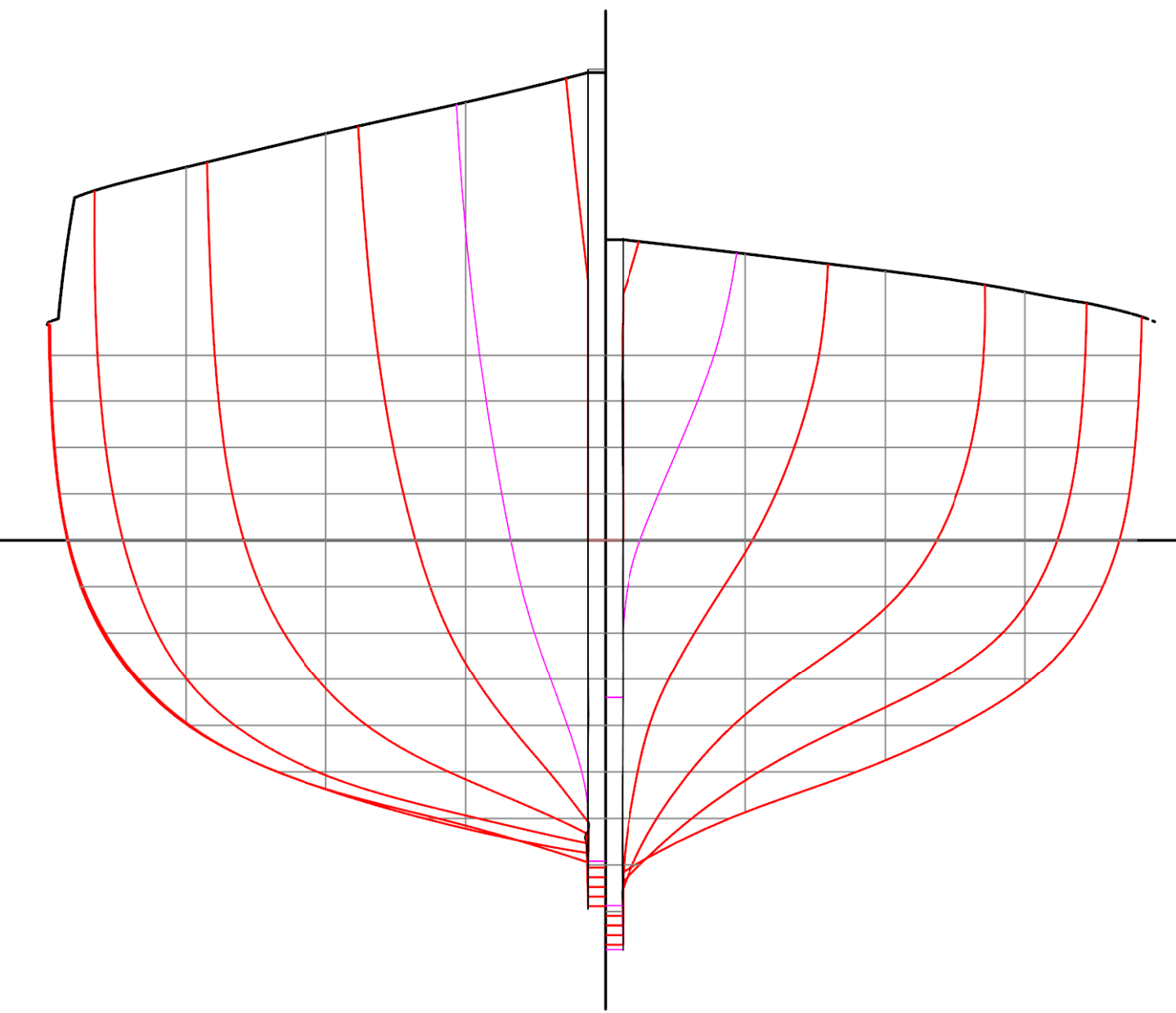
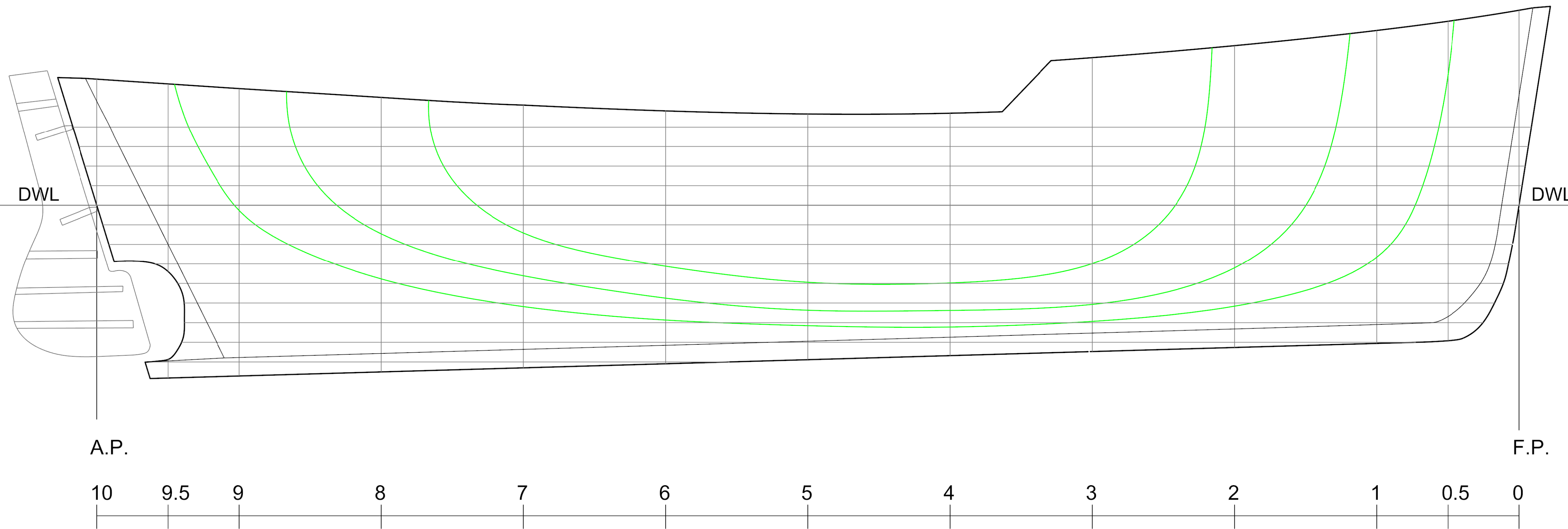


"Topaz"

Built 1899 at the Fisheries School, Baltimore



PRINCIPAL PARTICULARS
 Length Overall (On Deck).....11.5 m (37' - 9")
 Length W.L.....10.9 m (35' - 9")
 Beam..... 3.8 m (10' - 6")
 Draught 1.25 m (4' - 1")
 Displacement.....17,548 kg (17.27 tons)



NOTES
 This lines plan was produced by 3D laser scanning the original Vessel
 Lines drawn to outside of planking

LINES PLAN

CP.....0.590 AWP.....25.14 m² (270.6 ft²) WSA.....39.60 m² (426.25 ft²) LCB.....47.75% 257 kg/cm (1444 lbs/in)

Traditional Boats of Ireland Project

DRAWN P. Tanner DATE 2/11/2012
 DRAWING NUMBER 1 SHEET 1 of 1 A1
 MODEL UNITS Meters SCALE 1 : 20