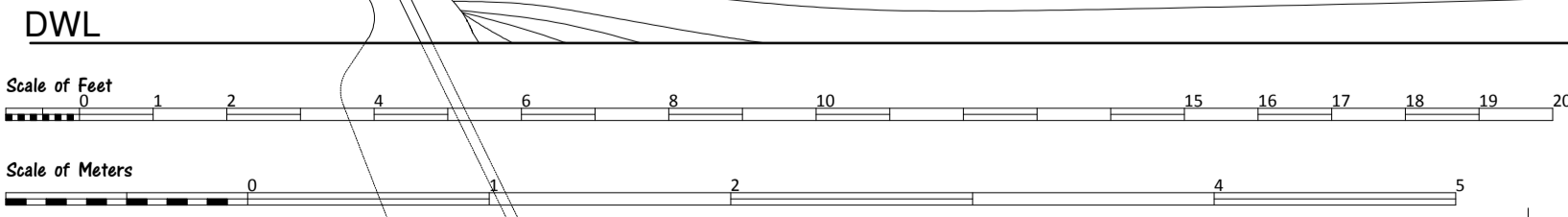
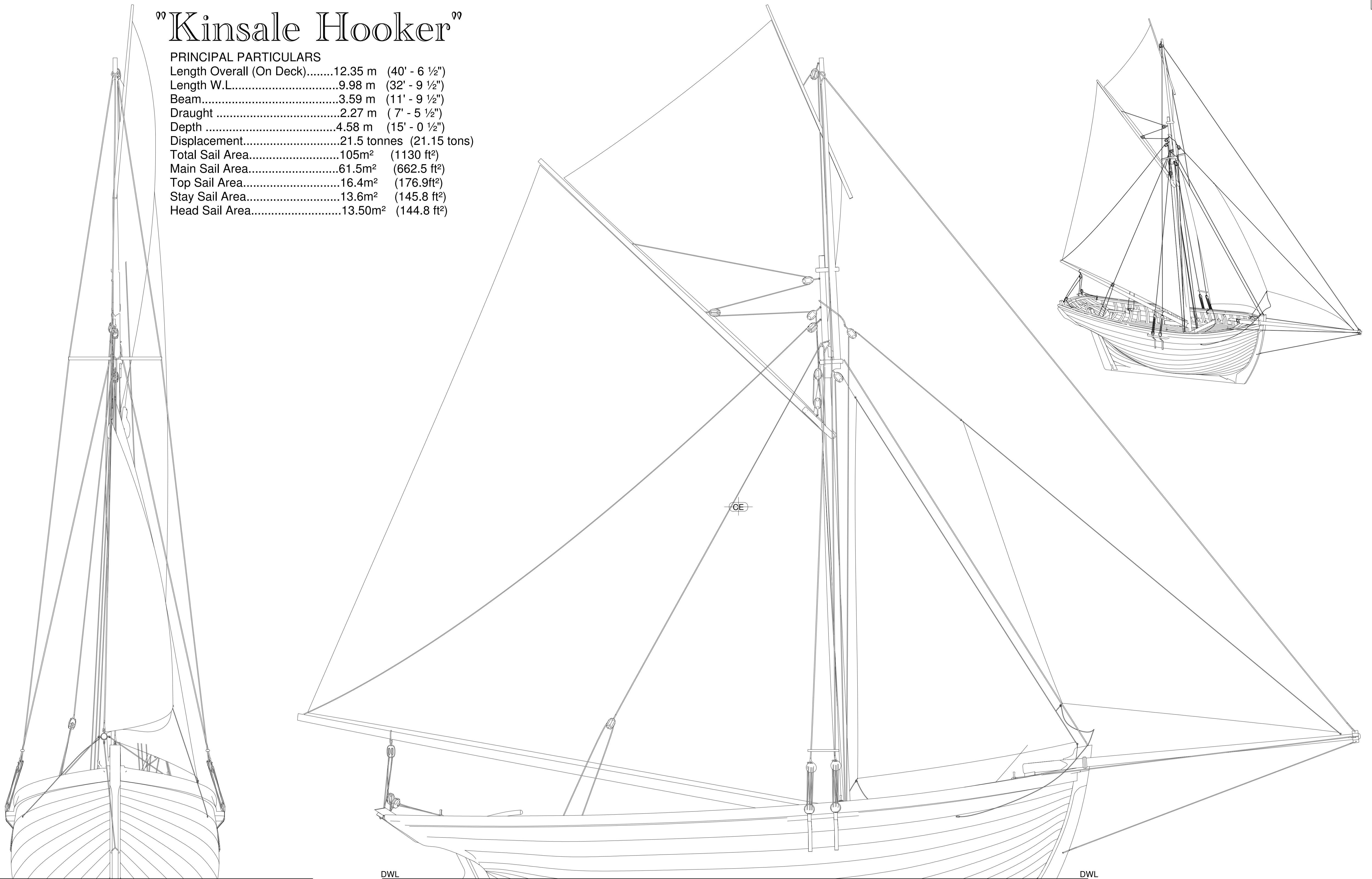


# “Kinsale Hooker”

## PRINCIPAL PARTICULARS

Length Overall (On Deck).....12.35 m (40' - 6 1/2")  
 Length W.L.....9.98 m (32' - 9 1/2")  
 Beam.....3.59 m (11' - 9 1/2")  
 Draught .....2.27 m (7' - 5 1/2")  
 Depth .....4.58 m (15' - 0 1/2")  
 Displacement.....21.5 tonnes (21.15 tons)  
 Total Sail Area.....105m<sup>2</sup> (1130 ft<sup>2</sup>)  
 Main Sail Area.....61.5m<sup>2</sup> (662.5 ft<sup>2</sup>)  
 Top Sail Area.....16.4m<sup>2</sup> (176.9ft<sup>2</sup>)  
 Stay Sail Area.....13.6m<sup>2</sup> (145.8 ft<sup>2</sup>)  
 Head Sail Area.....13.50m<sup>2</sup> (144.8 ft<sup>2</sup>)



## SAIL PLAN

### NOTES

This lines which are the basis for this drawing were produced by 3D laser scanning the National Museum Model

### Traditional Boats of Ireland Project

DRAWN **P. Tanner**

DATE **12/10/2011**

DRAWING NUMBER **4a**

SHEET **4 of 4 - A1**

MODEL UNITS **Meters**

SCALE **1 : 30**

CP.....0.579 AWP.....25.195 m<sup>2</sup> (271.2 ft<sup>2</sup>) WSA.....45.072 m<sup>2</sup> (485.15 ft<sup>2</sup>) LCB.....51% 258 kg/cm (1448 lbs/in) Ballast & Cargo.....12.9 tonnes (12.69 tons)