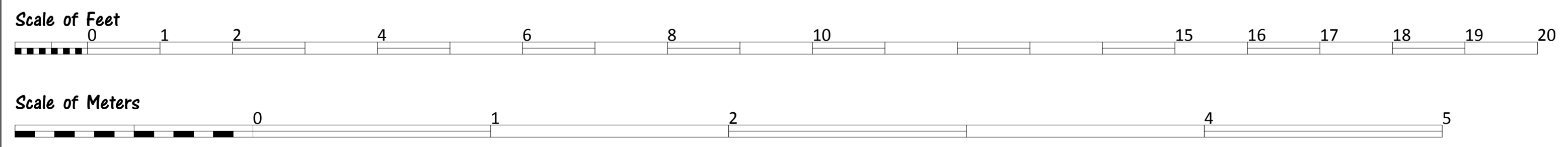
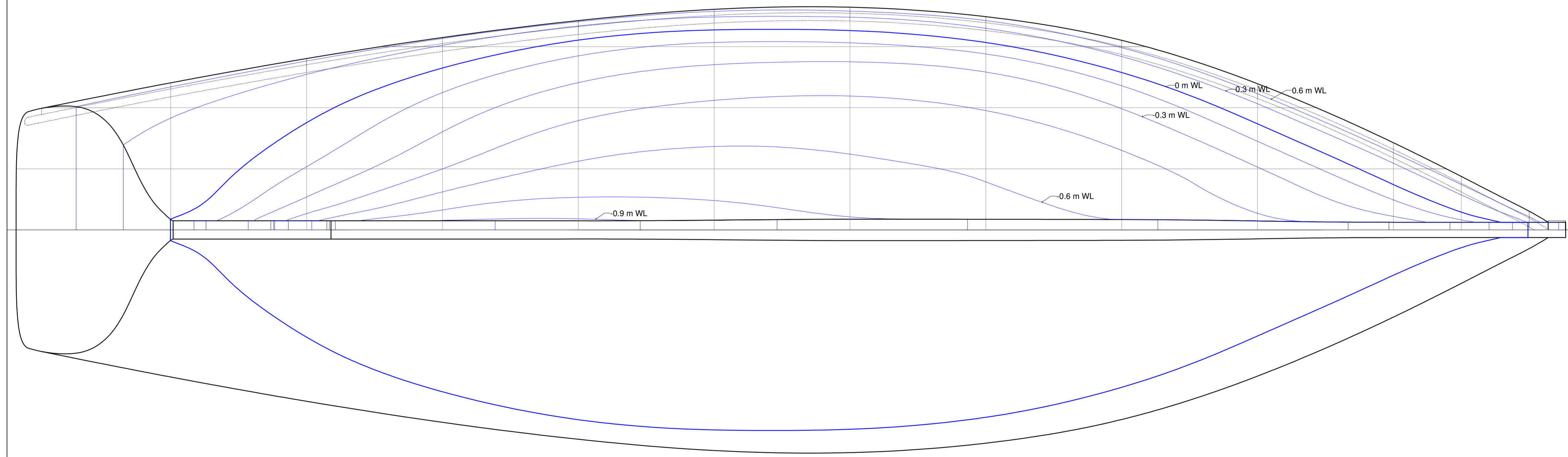
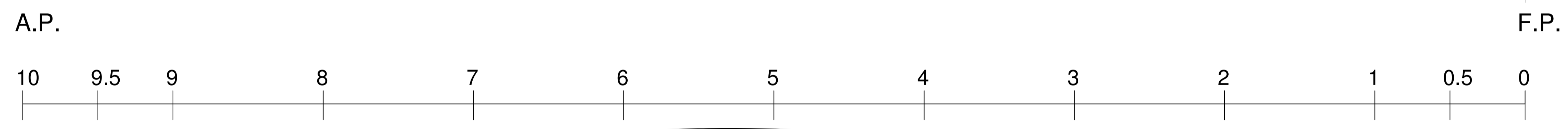
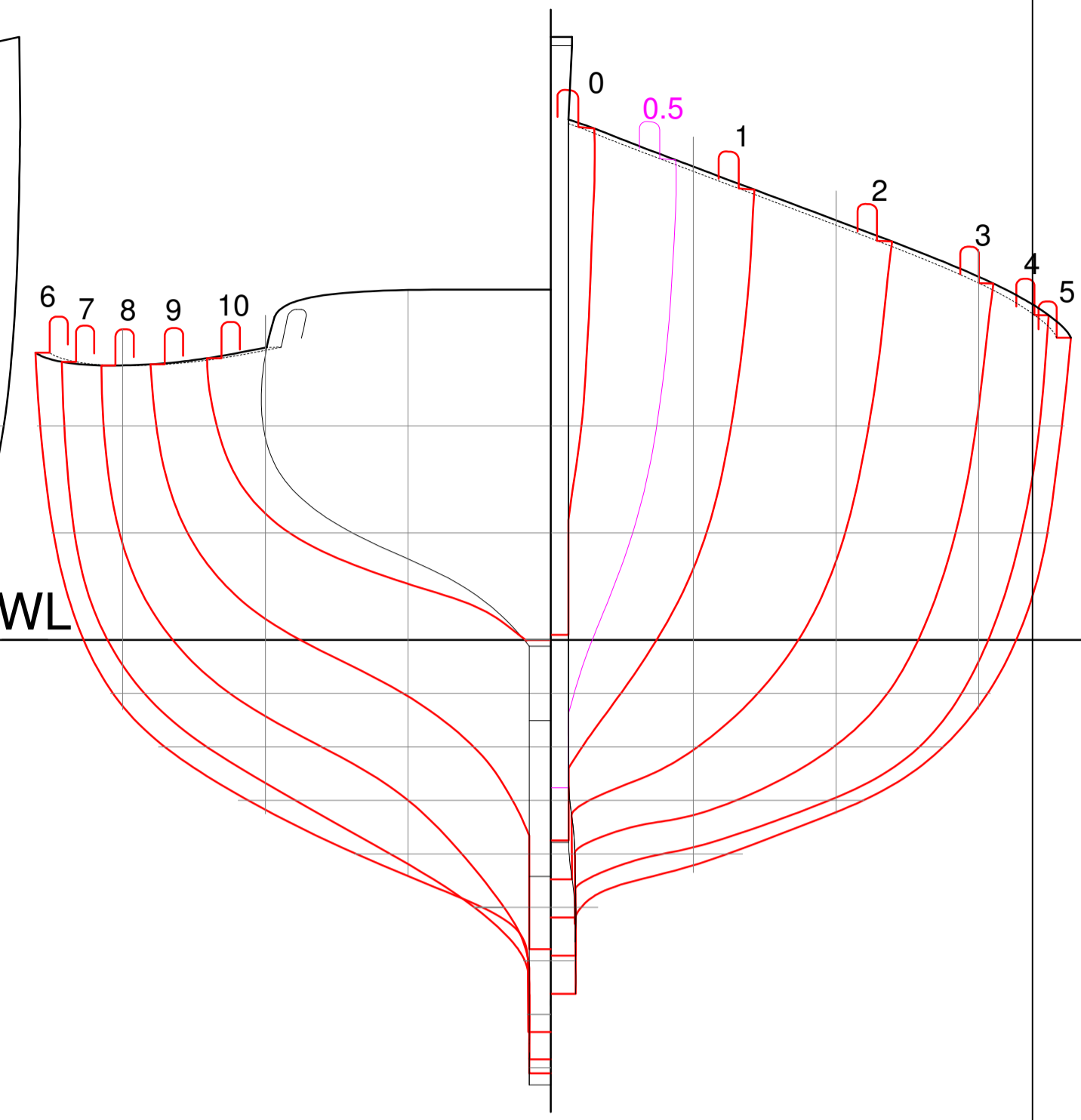
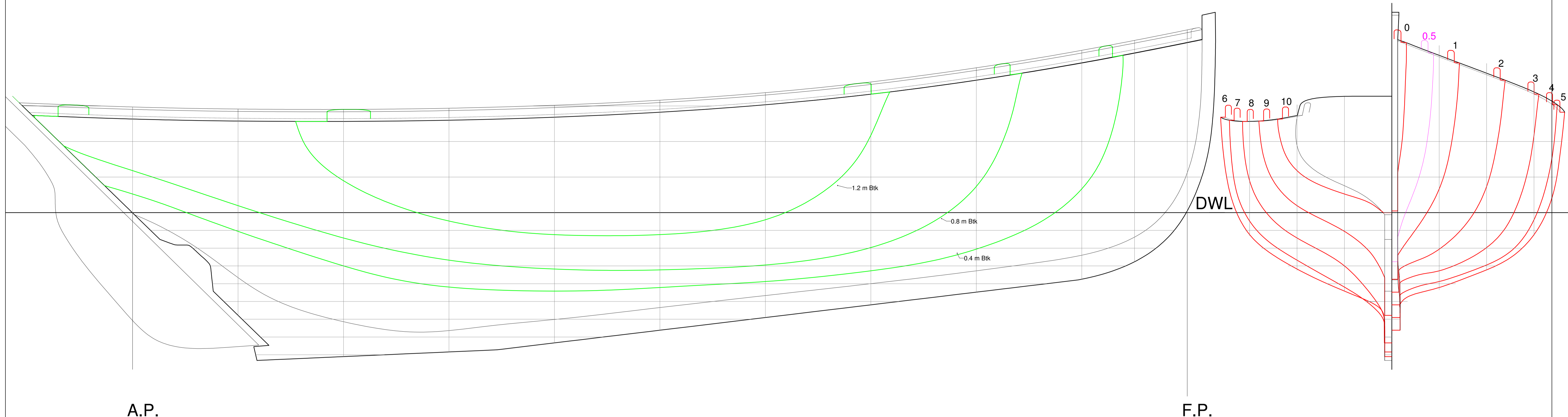


"Noble Shamrock - West Cork Mackerel Yawl"



PRINCIPAL PARTICULARS
 Length Overall (On Deck).....10.15 m (33' - 4")
 Length W.L..... 8.90 m (29' - 2")
 Beam..... 2.92 m (9' - 7")
 Draft 1.25 m (4' - 1")
 Displacement.....7.25 tonnes (7.14 tons)

NOTES
 This lines plan was produced by 3D laser scanning
 the full size boat
 Lines drawn to outside of planking

LINES PLAN

CP.....0.567 AWP.....15.90 m² (171.2 ft²) WSA.....24.60 m² (264.8 ft²) LCB.....51% 163.5 kg/cm (915 lbs/in)

Traditional Boats of Ireland Project
 DRAWN **P. Tanner** DATE **16/10/2011**
 DRAWING NUMBER **1** SHEET **1 of 1 - A1**
 MODEL UNITS **Meters** SCALE **1 : 16 (3/4" = 1'-0")**