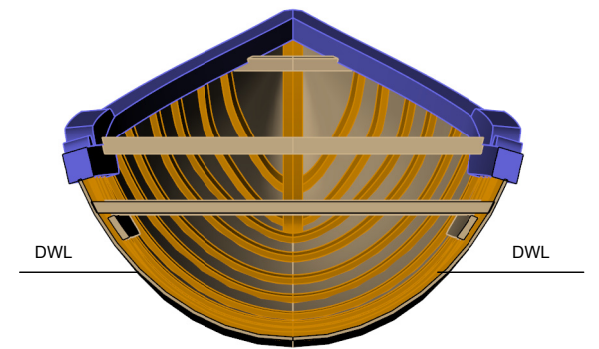
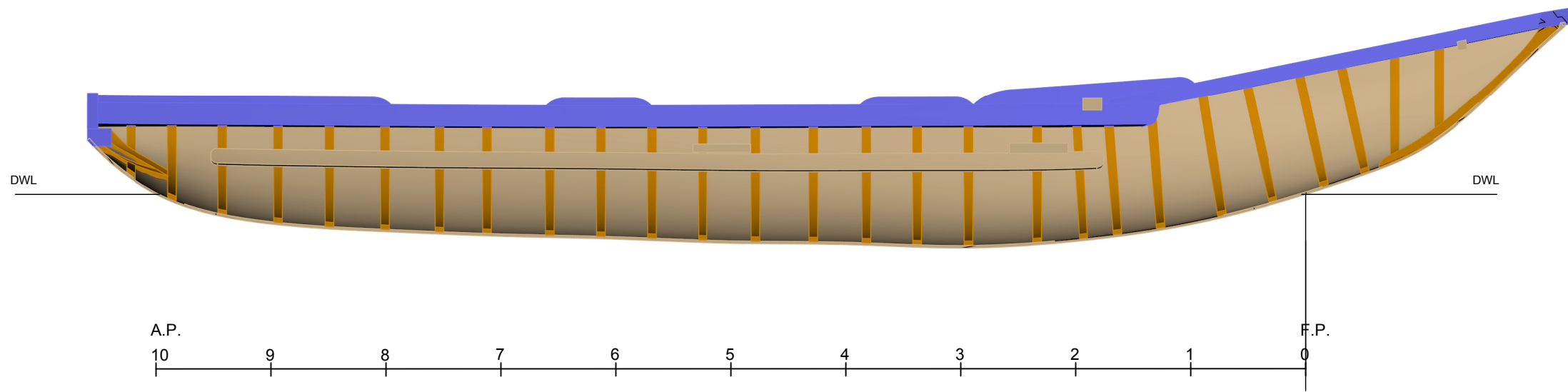
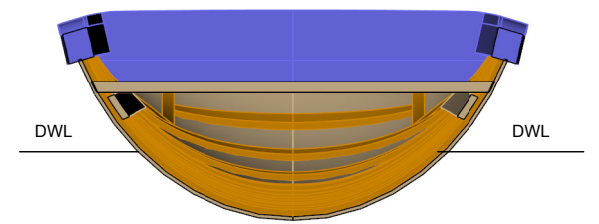
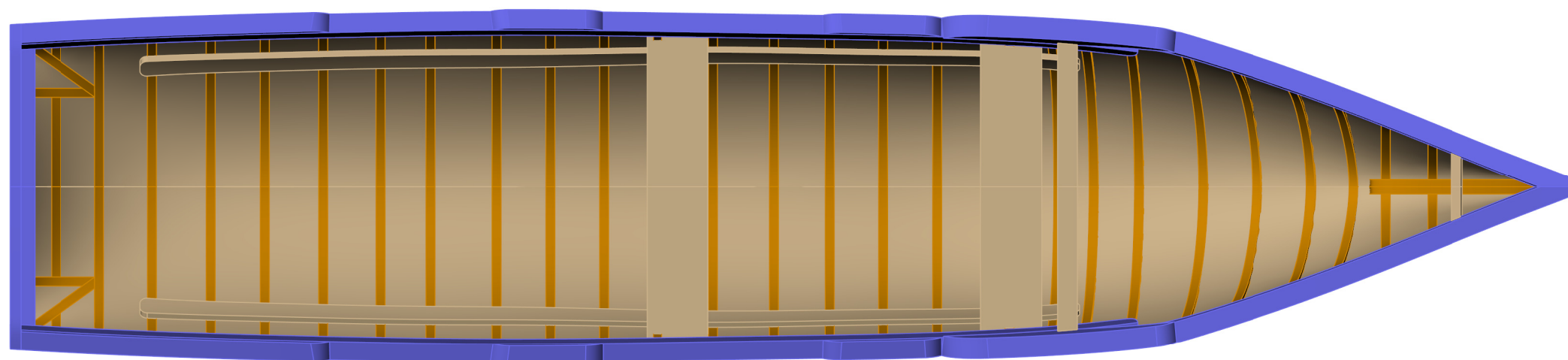


# “Inishkea curach”

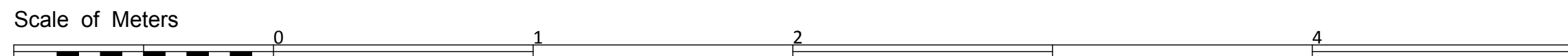
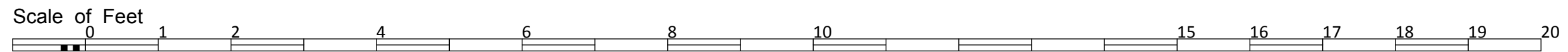
LOA..... 5.52m (18' - 1") LWL..... 4.26m (14' - 0") Beam..... 1.25m ( 4' - 1¼") Draught..... 0.198m ( 0' - 8")  
 Displacement..... 0.309t ( 0.324LT)  
 CP..... 0.656 AWP..... 3.038m<sup>2</sup> ( 32.7ft<sup>2</sup>) WSA..... 3.383 m<sup>2</sup> ( 36.4ft<sup>2</sup>) Weight to immerse 33.168kg/cm ( 186 lbs/in)



Section Looking Forward



Section Looking Aft



**PRINCIPAL PARTICULARS**

Length Overall.....	5.52m
Length W.L.....	4.76m
Beam.....	1.25m
Draught .....	0.198m
Displacement.....	330 Kg
Cp .....	0.656

**NOTES**  
 This lines plan was produced by 3D laser scanning the full size boat  
 Lines drawn to outside of hull

## General Layout

**Traditional Boats of Ireland Project**  
 DRAWN P. Tanner      DATE 19/01/2015  
 DRAWING NUMBER 2      SHEET 2 of 2 - A 3  
 MODEL UNITS mm      SCALE 1 : 20