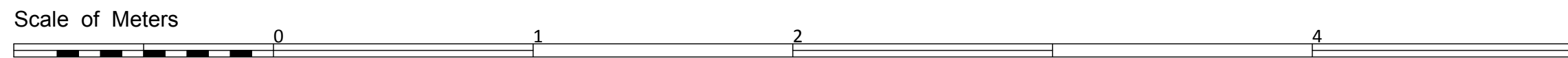
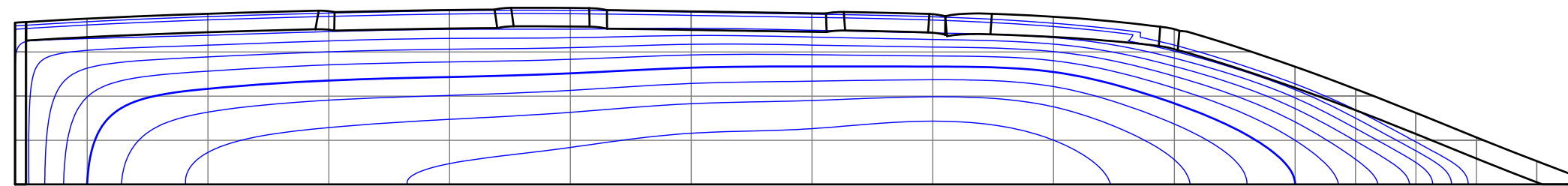
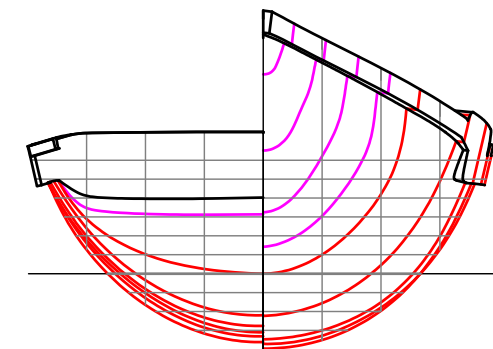
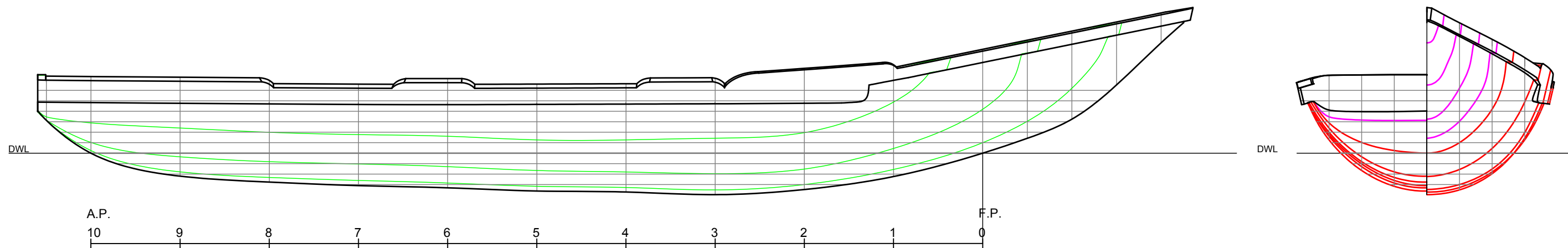


“Inishkea curach”

LOA..... 5.52m (18' - 1") LWL..... 4.26m (14' - 0") Beam..... 1.25m (4' - 1¼") Draught..... 0.198m (0' - 8")
 Displacement..... 0.309t (0.324LT)
 CP..... 0.656 AWP..... 3.038m² (32.7ft²) WSA..... 3.383 m² (36.4ft²) Weight to immerse 33.168kg/cm (186 lbs/in)



PRINCIPAL PARTICULARS
 Length Overall.....5.52m
 Length W.L.....4.76m
 Beam.....1.25m
 Draught0.198m
 Displacement.....330 Kg
 Cp 0.656

NOTES
 This lines plan was produced by 3D laser scanning the full size boat
 Lines drawn to outside of hull

Linesplan

Traditional Boats of Ireland Project
 DRAWN P. Tanner DATE 19/01/2015
 DRAWING NUMBER 1 SHEET 1 of 2 - A 3
 MODEL UNITS mm SCALE 1 : 20