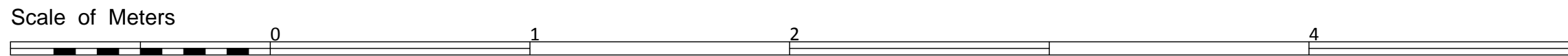
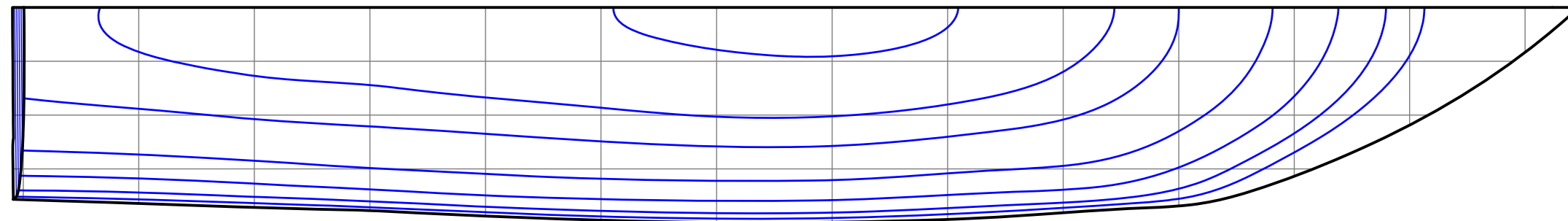
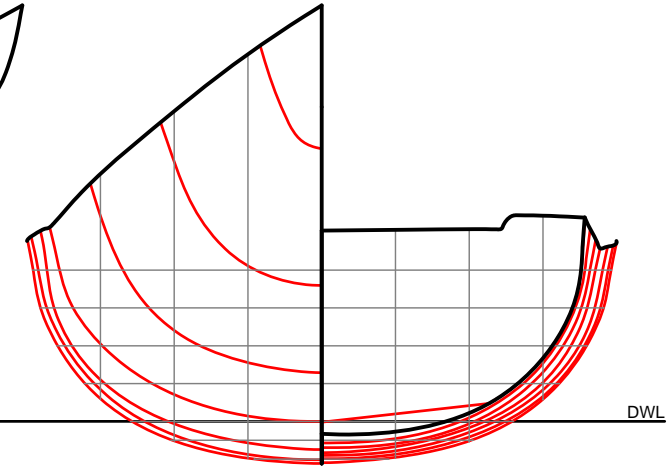
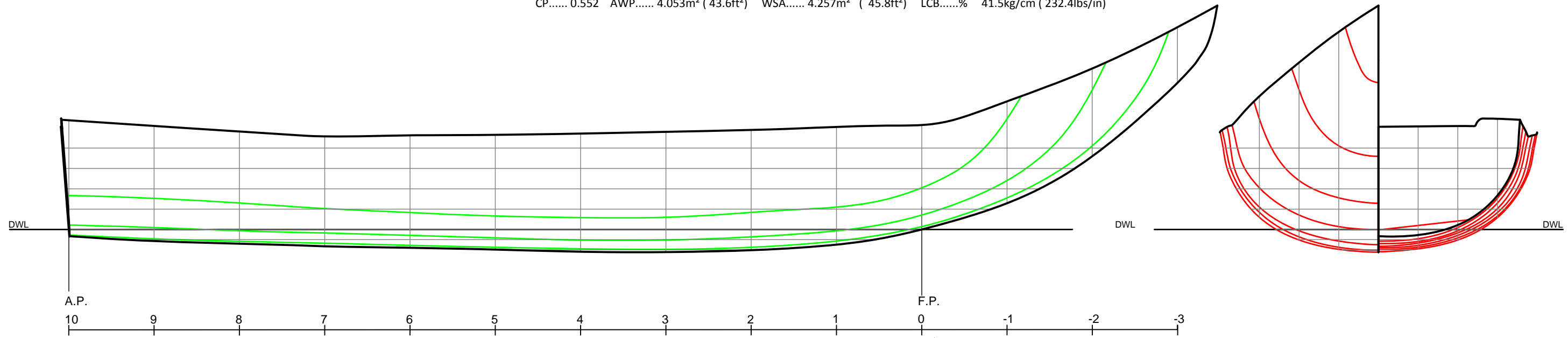


# "Inishturk curach"

LOD..... 5.685m (19' - 3") LWL..... 4.365m (14' - 4") Beam..... 1.560m ( 5' - 1½") Draught..... 0.180m ( 0' - 7")  
 Displacement..... 0.372t ( 0.366LT)  
 CP..... 0.552 AWP..... 4.053m<sup>2</sup> ( 43.6ft<sup>2</sup>) WSA..... 4.257m<sup>2</sup> ( 45.8ft<sup>2</sup>) LCB.....% 41.5kg/cm ( 232.4lbs/in)



**PRINCIPAL PARTICULARS**  
 Length Overall.....5.685m  
 Length W.L.....4.365m  
 Beam.....1.560m  
 Draught .....0.180m  
 Displacement.....372.95Kg  
 Cp ..... 0.552

**NOTES**  
 This lines plan was produced by 3D laser scanning the full size boat  
 Lines drawn to outside of hull

Linesplan

**Traditional Boats of Ireland Project**  
 DRAWN P. Tanner      DATE 29/09/2012  
 DRAWING NUMBER 1      SHEET 1 of 2 - A 3  
 MODEL UNITS mm      SCALE 1 : 20